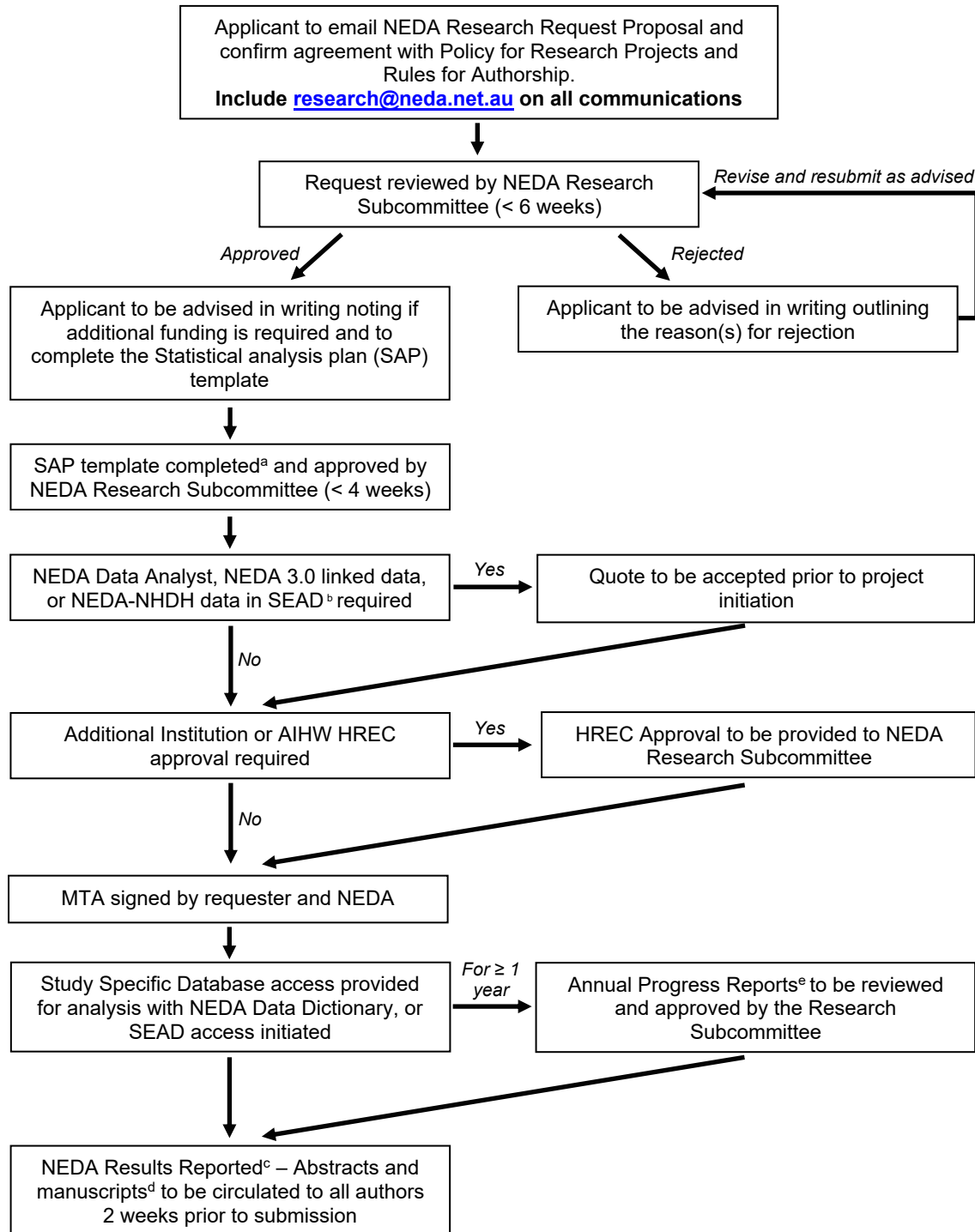


Principal Investigators:
 Professor David Playford
dplayford@neda.net.au
 Professor Geoff Strange
gstrange@neda.net.au



Steering committee:
 Professor David Celermajer
 Associate Professor David Prior
 Professor Greg Scalia
 Dr Elizabeth Paratz
 Dr Majo Joseph
 Professor Simon Stewart
 Professor Liza Thomas

**NEDA Research Application and Approval Procedure
 Version 3.0 May 2025.**



^a Study specific SAP template is to be completed in association with the STROBE guidelines, Data Dictionary, Master SAP and NEDA SAP
^b For further NHDH details such as cost, access and data items please see <https://www.aihw.gov.au/reports-data/nhdh/about>
^c NEDA research results are to be reported in accordance with the NEDA Policy for Research Project 2017 and the Rules for Authorship for publications for NEDA
^d Manuscripts to be drafted using the Strange G et al, 2019 JACC publication as a template
^e Annual HREC progress reports will be accepted in lieu of the NEDA Annual Report
 Please CC research@neda.net.au on all communications

Principal Investigators:
Professor David Playford
dplayford@neda.net.au
Professor Geoff Strange
gstrange@neda.net.au



Steering committee:
Professor David Celermajer
Associate Professor David Prior
Professor Greg Scalia
Dr Elizabeth Paratz
Dr Majo Joseph
Professor Simon Stewart
Professor Liza Thomas

NEDA Cost Recovery Schedule Version 1.0 May 2025.

NEDA dataset options

1) NEDA 2.0 (legacy database)

- Data census date 21 May 2019.
- SPSS file with deidentified data.
- Fee: Programming to create database for specific research needs. Estimate 2 hours per database extract, \$300 minimum.
- No virtual server fees, database downloaded to personal computer under Materials Transfer Agreement.

2) NEDA 3.0 (current database)

- Death data census date 25 September 2024
- Deidentified data via virtual machine access, \$1000 +GST per month. Assume 3-6 months of access required.
- Initial set up cost = \$600.
- Suggested software is R (free), due high costs of SPSS etc on VM.

3) NEDA 3.0 and NHDH linked datasets, access to NHDH via SEAD platform

- Includes MBS, PBS, NDI, Admitted and Emergency Department care databases.
- See <https://www.aihw.gov.au/reports-data/nhdh/data> for more details.
- Note: NEDA does not have access to the Australian Immunisation Register (AIR) or Repatriation Pharmaceutical Benefits Scheme (RPBS).
- Each project must have an authorised user to access platform – Admin fee \$500, includes s.29 form and addition of the user as a Data Analyst to SEAD.
- SEAD annual access fee with Stata, SAS and LibreOffice software \$5980.
- Other annual fees per **project** = \$5500. This includes the Data Programming costs to prepare the database for analysis (8 hours @\$150 per hour). Note: More than one user can be included in the project cost, but each user must have individual login to SEAD, therefore attracting the SEAD annual access fee.
- **Indicative minimum total cost for 1 year of access to entire linked dataset in SEAD: \$11,980.**

NEDA Data Analysis fees (Advanced Statistician Support)

- Price will be determined based on individual researcher requirements. Please contact research@neda.net.au for more information.

NEDA ethics and governance fees (if ethics amendments are required for your project and/or access)

- NEDA ethics and governance officer \$100 per hour, minimum 4 hours (\$400).